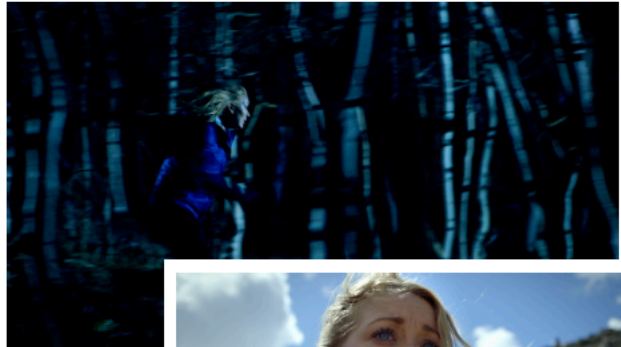


UK Premiere MARCH 17 - 7PM GMT

Blue Jay

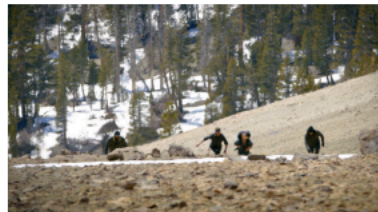
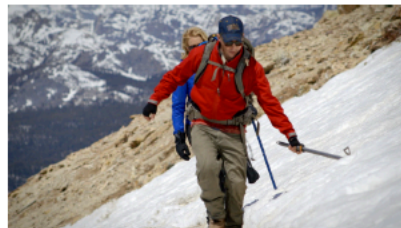


Most men bring flowers to impress their date. Not Jack. Jack wants to make his presence known and charm his prospective lover with an experience not to be forgotten. Intrigued, Ashley accepts Jack's adventurous invitation to hike John Muir Trail on Mount Whitney, the tallest mountain in California and the highest peak in the lower 48 states.

However, before the new couple embarks on their inaugural adventure, Ashley curiously asks the diner waitress if the hike was, "safe." From that point, the ambitious date begins its transformation into a test for survival.

Blue Jay, by director and co-writer, Michael Ciulla, portrays a classic, indie thriller tale of survival with breathtaking views of Mount Whitney and eerie visual takes of the darkness that lurks within the wilderness.

The original score, by Roman Kovalik, expresses a creepy horror tale all on its own: one that perfectly complements Ciulla's spine-chilling imagery, similar to that of Kubrick's, *The Shining*.



A mysterious group of mountain men stalk a young woman on Mount Whitney.

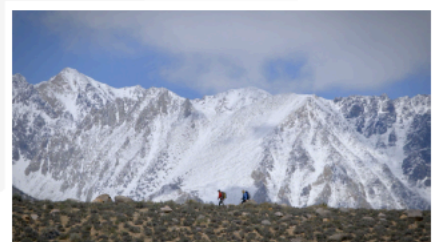
Vikram Murthi, Indie Wire

Ashley, performed by Sara Lindsey (co-writer), entrusts Jack, played by Travis Aaron Wade, to lead her on the two-day expedition to an elevation of 14,501 feet packed with rough terrain and intense weather conditions. Jack proudly coaches Sara on the intricate ins and outs of trail mastery. His masculine bravado and survival prowess earns Ashley's affections as she continues to follow him through ostensibly hazardous conditions.

As the new couple climbs to greater heights, both on the trail and in the newness of their relationship, a confrontation by an unpredictable threat appears when they clash with a gang of disturbed mountain men. Jute, who prefers his mountain name, March (James Landry Hébert), leads the deranged wilderness clan's mission the same way a pack of wolves stalks their prey.

Lindsey and Wade are terrific as the fledgling couple. A series of flashbacks suggests the innocent of their trip's origin. Yet it becomes increasingly frightening when drawn into a new, more disturbing context.

Christian Toto, Hollywood in Toto



The clan's unsettling, and downright creepy presence throughout the climb, set off an intuitive alarm within Ashley. Jack makes every effort to keep her safe, but in the end, Ashley's determination to return to 3,200 feet alive must be strong enough to survive all obstacles from both mother nature and the wild pack of males hell-bent on having their way with her.

Blue Jay, inspired by Michael Ciulla's own unsettling experience during a hike, exposes the unnerving horror of what happens when the obscurity of the wilderness clashes with the maniacal tendencies of the human psyche.